

# ORGANIZATION STRUCTURE

**HEAD OFFICE**

**Administrative office-Raebareli**

**Administrative office-Varanasi**

**Administrative office-Gorakhpur**

S.N.	Region	No. of Branches
1	Amethi	58
2	Bareilly	81
3	Etawah	53
4	Fatehpur	77
5	Kanpur	65
6	Kanpur Dehat	59
7	Raebareli	89
8	Shahjahanpur	80
<b>Total</b>		<b>562</b>

S.N.	Region	No. of Branches
1	Prayagraj	87
2	Azamgarh	74
3	Bhadohi	61
4	Chandauli	47
5	Ghazipur	68
6	Jaunpur	72
7	Kaushambi	61
8	Pratapgarh	97
9	Sultanpur	79
10	Varanasi	64
<b>Total</b>		<b>710</b>

S.N.	Region	No. of Branches
1	Ballia I	45
2	Ballia II	46
3	Basti	61
4	Deoria	59
5	Ayodhya	92
6	Gorakhpur I	60
7	Gorakhpur-II	52
8	Padrauna	56
9	Maharajganj	58
10	Mau	72
11	Khalilabad	51
12	Naugarh	59
<b>Total</b>		<b>711</b>

- **Head Office - 01**
- **Administrative Office - 03**
- **Regional Office - 30**
- **Branches - 1983**

## **ADMINISTRATIVE OFFICE – SET UP**

<b>ADMINISTRATIVE OFFICE</b>						<b>Total</b>
<b>Headed by DGM/AGM from Sponsor Bank</b>						
↓						
<b>Chief Manager</b>						1
↓						
<b>Departments</b>						
Scale/ Grade	Credit & NPA monitoring	Operations	Audit & Inspection	Office Administration and Premises & Equipments	HRM	
<b>Dept. Head Officer Scale-III</b>	1					01
<b>Officer Scale-II/I</b>	2	1	1	1		05
<b>Office Assistant (M)</b>	1		1			02
<b>Office Attendant (M)</b>	1					01
						10

## **REGIONAL OFFICE – SET UP**

S.N.	Name of Department	No. of Officers & its Grade /Scale	No. of Office Assistants	Departmental Head	No. of Office Attendant
1	HRM, Office Administration	Scale-II - One	Off. Asstt. - One	Sr. Manager (HRM) - One	Total Maximum 02 Office Attendants to function for all departments including attending RM & CM
2	Vigilance, Complaint, RTI & Legal	Scale-II - One			
3	Inspection and Audit	Scale-II - One			
4	IT	Scale-II or I - One			
5	Premises and Equipment	Scale-I - One			
1	Credit	Scale-II - One	Off. Asstt. - One	Sr. Manager (Credit) - One	
2	Credit Marketing	Scale-I - One			
3	Recovery, NPA Monitoring	Scale-II - One			
4	Operations, Planning & Services	Scale-II - One			
5	FI & BC	Scale-I - One			

S. No.	AO	Region	As on 31.03.2022					Total
			A	B	C	D	E	
01	GORAKHPUR	BALLIA-1	01	20	24			45
02		BALLIA-2		17	27	02		46
03		BASTI		19	40	02		61
04		DEORIA	01	18	38	02		59
05		AYODHYA		23	64	05		92
06		GORAKHPUR-1	01	10	46	03		60
07		GORAKHPUR-2	06	14	29	03		52
08		KHALILABAD		27	24			51
09		MAHARAJGANJ	07	25	26			58
10		MAU	07	18	41	06		72
11		NAUGARH	06	28	25			59
12		PADRAUNA	03	20	33			56
01	RAEBARELI	AMETHI	03	17	36	02		58
02		BAREILLY	01	38	41	01		81
03		ETAWAH	01	26	26			53
04		FATEHPUR		23	51	03		77
05		KANPUR		12	38	15		65
06		KANPUR DEHAT	02	24	29	04		59
07		RAEBARELI		25	61	02	01	89
08		SHAHJAHANPUR	06	29	43	02		80
01	VARANASI	PRAYAGRAJ	01	30	51	05		87
02		AZAMGARH	02	14	50	08		74
03		BHADOHI	07	13	40	01		61
04		CHANDAULI	02	20	25			47
05		GHAZIPUR	04	30	33	01		68
06		JAUNPUR	02	24	43	03		72
07		KAUSHAMBI	01	28	31	01		61
08		PRATAPGARH	01	30	63	03		97
09		SULTANPUR		18	55	06		79
10		VARANASI	01	16	36	10	01	64
<b>TOTAL</b>			<b>66</b>	<b>656</b>	<b>1169</b>	<b>90</b>	<b>02</b>	<b>1983</b>

## PRESENT HEAD OFFICE STRUCTURE

CHAIRMAN

General Manager-1

General Manager-2

General Manager-3

AGM

CMS

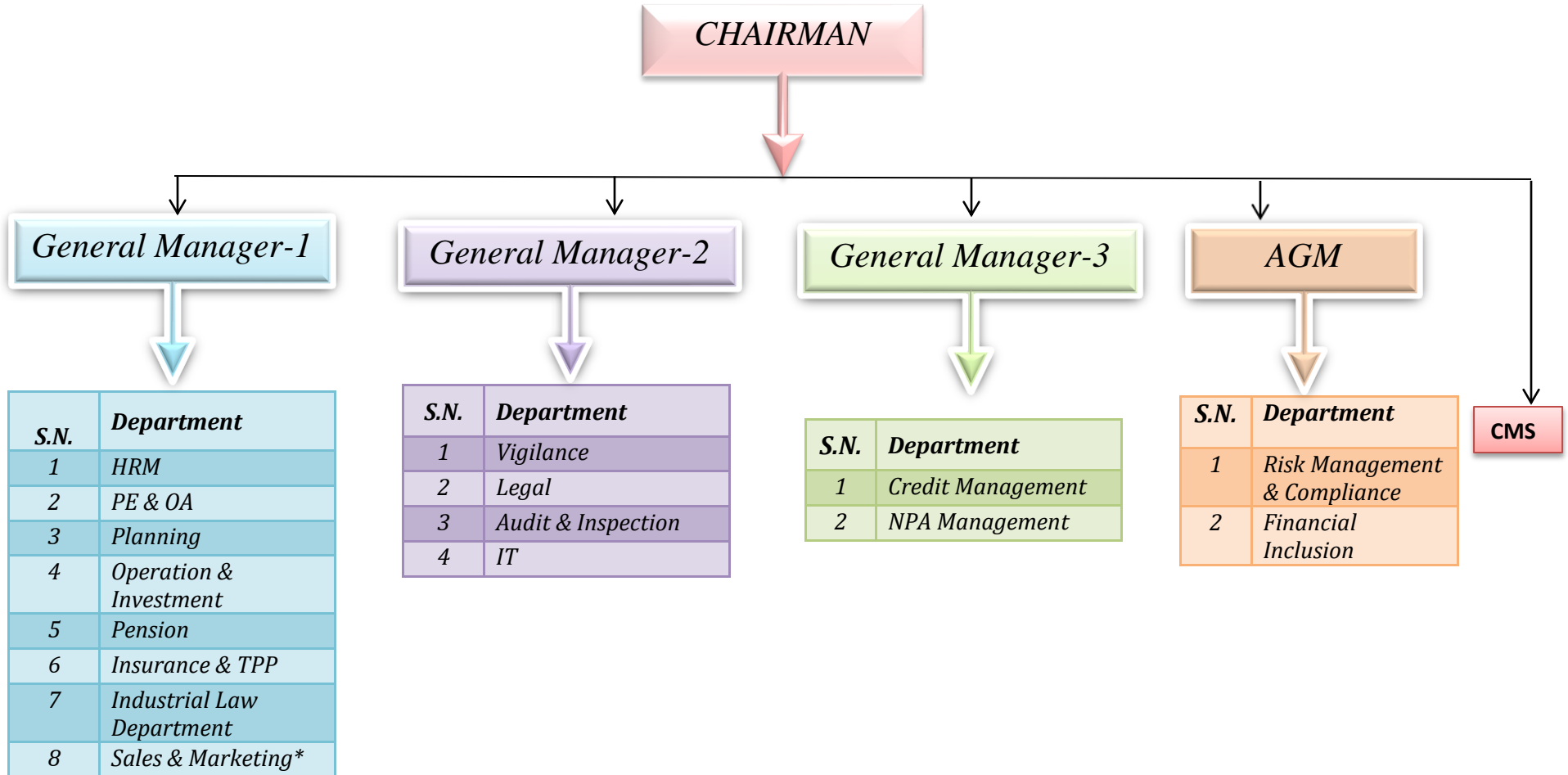
S.N.	Department
1	HRM
2	PE & OA
3	Planning
4	Operation & Investment
5	Pension
6	Insurance

S.N.	Department
1	Vigilance
2	Legal
3	Audit & Inspection
4	IT

S.N.	Department
1	Credit Management
2	NPA Management

S.N.	Department
1	Risk Management & Compliance
2	Financial Inclusion

## **PROPOSED HEAD OFFICE STRUCTURE**



**\*Note :-**

- a. Branding – Participation in Kisan Mela, Advertisements, Promotions etc.
- b. Driving Special campaigns.
- c. Making tie-ups with Dairy Firms, Auto-Sellers, Property Developers etc.
- d. Meeting with Govt. Departments for deposits & salary A/cs etc.
- e. providing aid & support to Branches, ROs & Hos for better reach & marketing of Loan, Deposit & TPP products.